



**THE INTERNATIONAL BILINGUAL SCHOOL,
BAILLARGUES**

Excellence, Progress, Balance, Integrity.

**DOCUMENTATION
2026 - 2027**

SUMMARY

Location	P. 02
The School (EPBI)	P. 03
Particularities	P. 04
Curricula	P. 05
Exams	P. 15
School Activities	P. 18
Clubs	P. 20
School trips and trips abroad	P. 21
School Fees	P. 25
Options	P. 27
School opening times, School calendar	P. 28
How to enroll and payment	P. 29
School Year Equivalence	P. 32
Canteen Service	P. 33
Communication	P. 34
Appendix	P. 35

Location



The International Bilingual School is located in 120 hectares of parkland, in the Massane Golf Club, Baillargues.

This town of 7400 inhabitants is situated just 10 minutes away from Montpellier on the A9 motorway.



How to get to the school

By road

Motorway A9 – Exit n°28 Vendargues – Baillargues.

At the Philippe LAMOUR roundabout, follow directions to “Golf de Montpellier-Massane”.

The school is approximately 15 minutes by car from Montpellier city centre.

By train

The modernised railway station in Baillargues allows passengers to travel to the Saint Roch train station in the centre of Montpellier in just 8 minutes.

The school is situated just 300 metres from the station.

By aeroplane

The nearest airport is: Montpellier Méditerranée.

The school is just 15 minutes by car.

Schedule

Monday-Tuesday-Thursday-Friday	From 7.45am to 6pm
Wednesday	From 7.45am to 4.30pm

ECOLE PRIVEE BILINGUE INTERNATIONALE
Domaine de Massane. 34670. BAILLARGUES
Tél. : (33) 467 707 844 Fax: (33) 467 707 846 Mail: info@epbi.net Web: www.epbi.net
RC B389043423



The school (EPBI*)



Established in 1988, the school welcomes many different nationalities, from Kindergarten, to Primary and Secondary school through to sixth form education.

EPBI offers **2 curricula**:

- an INTERNATIONAL curriculum (IB)
- a NATIONAL curriculum

Our active pedagogy and educational approaches to learning allow each student to develop their creativity, independence of mind and responsibility as future citizens of the world, at a very early age.

International awareness is promoted by open-mindedness and having a broad outlook on the world.

EPBI welcomes pupils of all different profiles:

French pupils whose parents are keen to offer their children a bilingual education,
French pupils returning from short or long-term periods abroad (2–5 years),
Pupils of different nationalities (British, American, Australian, Spanish, Russian, Chinese ...),

Pupils who have already studied at another European school, a lycée français, or an international school.

EPBI School Director

Dorothee LEBAILLIF

Administrative Director

Jean-Marc LEBAILLIF

Head of Kindergarten and Primary School

Séverine MENEU

Head of Secondary and Sixth Form Schools

Stéphane MAZEL

Head of the Language Department

Helen THIRTLE – LEOTARD

International Baccalaureate Coordinator & University Application Counsellor

Alexandra DAVID



(* *Ecole Privée Bilingue Internationale*)

ECOLE PRIVEE BILINGUE INTERNATIONALE

Domaine de Massane. 34670. BAILLARGUES

Tél. : (33) 467 707 844 Fax: (33) 467 707 846 Mail: info@epbi.net Web: www.epbi.net

RC B389043423

Particularities

Our Philosophy

EPBI is an institution of **high standards** and **ambition** offering every pupil the path to success. Learners are at the heart of our philosophy.

Our attachment to bilingualism, and more generally to multilingualism, supports the opportunity for an education that is open to the world.

Teaching based on academic learning which enhances cognitive skills is important. However, these skills alone are not enough for an international education. Therefore affective and metacognitive skills are actively developed to foster creative and critical thinking.

Academic skills as well as thinking, communication, social and research skills, are all equally important.



Teaching focuses on understanding concepts, supported by research and teamwork in local and global contexts.

Our values:

- Creative and critical thinking,
- Rigour and surpassing oneself,
- Respect and tolerance.

The school's objectives

- To favour personality development and to enhance the real potential within every pupil by encouraging creative thinking, critical reasoning and open-mindedness to other cultures and learning.
- To give all pupils excellent skills in at least 2 languages (French and English) in order to build intercultural relationships, whatever the nationality.
- To promote a level of knowledge, skills and understanding to be able to study anywhere in the world.
- To develop a sense of self-respect and respect for others allowing our pupils to become healthy and responsible citizens of the world.



ECOLE PRIVEE BILINGUE INTERNATIONALE
Domaine de Massane. 34670. BAILLARGUES
Tél. : (33) 467 707 844 Fax: (33) 467 707 846 Mail: info@epbi.net Web: www.epbi.net
RC B389043423

The strengths of the school

French-English bilingualism.	Educational organisation.
Reduced numbers of pupils in class.	School study trips abroad.
Safe and spacious environment of the school.	
<u>International open-mindedness:</u>	
→ Welcoming foreign pupils and non-French speakers in Kindergarten, Primary and Secondary school: The organisation of our teaching and relatively small size of the school enables us to welcome and integrate all our students and to follow each child personally throughout their schooling.	
→ Welcoming all French speakers, bilingual or not, in Kindergarten, Primary and Secondary school. → Individual guidance for post-baccalaureate studies in France and abroad. → Possible adaptation of school timetable for sports activities outside of school.	

All these specific particularities are assets for the success of students coming to EPBI.



The curricula

→ INTERNATIONAL

International Primary Programme (IPP)
IPP Year 4 / 5 (equivalent to CM 1 and CM 2)



MYP 1-2-3-4-5 (Middle Years Programme)
(Equivalent to 6ème to 2nde)



IB DP 1 and IB DP 2 (IB Diploma Programme)
(Equivalent to 1^{ère} and Terminale)



→ NATIONAL

From Petite Section in Kindergarten to CM2:



The school provides French-English bilingual education from the Middle Section in Kindergarten through to CM2 in Primary. The Little Section of Kindergarten (TPS / PS) is total immersion in English.

From 6^{ème} to 3^{ème} (Secondary school), 2 sections offered:



A national bilingual section (French-English).



A European national section (French).

From 2^{nde} Générale to Terminale:



General Baccalaureate preparation, specialised options: Maths - Physics/ Chemistry (P/C) - Biology and Earth Sciences (SVT) – Social and Economic Sciences (SES) - History- Geography / Geopolitics / Political Science (HGGSP).

From 3^{ème} to Terminale / from MYP4 to DP2

EPBI, in partnership with Academica Dual Diploma, prepares students for a double diploma.



- International Baccalaureate IB & High School Diploma (American Baccalaureate)
- French Baccalaureate & High School Diploma (American Baccalaureate)

ECOLE PRIVEE BILINGUE INTERNATIONALE

Domaine de Massane. 34670. BAILLARGUES

Tél. : (33) 467 707 844 Fax: (33) 467 707 846 Mail: info@epbi.net Web: www.epbi.net

RC B389043423

1/ International Curricula

From IPP 4/5 to the International Baccalaureate DP



EPBI Mission Statement

Excellence, **P**rogress, **B**alance and **I**ntegrity...

EPBI is a place conveying values where our learners become rational and responsible citizens of the world.

Educational organization

Limited number of students per class
Educational support in small groups
Close communication between the family-student-teaching team
Management of university applications and study grants.

The international programmes offers students aged 9 to 19 a stimulating and high quality education and an orientation towards international reality.

EPBI's objectives are to:

- **Favour the development of the personality and the potential of every pupil by helping them to think in a creative way, to argue in a critical way and to be open to learning and to various cultures,**
- **Give excellent skills to all pupils in at least 2 languages (French and English) which will enable them to build intercultural relations with others, whatever their nationality,**
- **Promulgate a level of knowledge, skills and understanding allowing them to study all over the world,**
- **Encourage students to develop a sense of self-respect and respect for others and to allow each pupil to become a respectful and responsible citizen of the world.**

The international programmes use best practices from a variety of educational settings and curricula.

The international programmes make students aware of international reality and engage them in thinking that goes beyond their immediate environment.

There may be mixed year group classes for educational purposes or due to pupil numbers.

ECOLE PRIVEE BILINGUE INTERNATIONALE
Domaine de Massane. 34670. BAILLARGUES
Tél. : (33) 467 707 844 Fax: (33) 467 707 846 Mail: info@epbi.net Web: www.epbi.net
RC B389043423



IPP: International Primary Programme Year 4 and 5

(Equivalent to CMI/CM2)

The language of instruction for the IPP is **English**.

The educational practices of the International Primary Programme (IPP) are based on the curiosity and creativity of the child through research. The interest of the student is essential to develop their learning and openness to the world.

During the cycle of the International Primary Programme (IPP) which is organised over two years, the children will guide their education through a perpetual questioning of the world around them. Learning to put in place strategies to answer these questions allows students to acquire the skills and knowledge that are essential to good personal and intellectual development.

To do this, the IPP is organised into an **interdisciplinary** way through eight subjects around five themes.

Subjects taught:

- English language and literature
- Study of the French language
- Maths
- Science
- Individuals and Societies
- Art
- Physical and health education
- Community project



The topics covered in the different subjects:

- Citizenship and human rights
- Health and wellbeing
- Intercultural diversity understanding
- From the universe to man
- Sustainable development and ecological transition

For teaching to be interdisciplinary, each theme must be worked on in at least two different subjects.

The IPP Community Project Exhibition:

The Community project exhibition is an opportunity for students to present an action carried out during the year to a school audience. This action aims to help the local, national and international community. It is an important event because it allows to carry out a group project from start to finish, as well as reflection on the finished work by applying a retrospective on what worked and what could be improved for next time. It is a moment of sharing where the students understand that they can have a direct action on the world around them. The students realise that at their young age and level, they can help the community.

Assessment in IPP:

Different assessment strategies are in place:

- Observing
- Assessment of achievements
- Procedure-based strategy
- Question-answer strategy
- Open-task strategy

ECOLE PRIVEE BILINGUE INTERNATIONALE

Domaine de Massane. 34670. BAILLARGUES

Tél. : (33) 467 707 844 Fax: (33) 467 707 846 Mail: info@epbi.net Web: www.epbi.net

RC B389043423



MYP: Middle Years Programme

MYP1 to 5, Grade 6 to 10 (USA), Year 7 to 11 (UK)



In MYP, the language of instruction is **English**.

The MYP study programme is made up of a common core element and 8 subject groups.

There are two parts to the common core:

- Service as Action and Community Project: Volunteering for charities throughout the MYP programme concentrating on the school and local community and inciting pupils to explore their rights and responsibilities.

- Personal Project: This is an individual project carried out in the final 2 years of MYP (MYP 4/ 5) encouraging pupils to reinforce their skills linked to approaches to learning.

The 8 subject groups are:

- Group 1 Language and Literature
- Group 2 Language acquisition French (from beginners to native speakers)
- Group 3 Individuals and Societies
- Group 4 Sciences
- Group 5 Mathematics
- Group 6 Arts
- Group 7 Physical and Health Education
- Group 8 Design (MYP 1, 2 and 3)
- Theory of Knowledge (TOK) MYP4 & 5
- Orientation (MYP5)

Different subjects are offered within each group.

The MYP pedagogical framework includes:

- **Learning approaches** that help students “learn to learn” by developing their skills.
- **Key and related concepts** that encourage students to explore great and important ideas.
- **Global contexts** that help them measure the relevance and importance of their studies.

Official Assessment in MYP

In MYP5, the final year of MYP, students must carry out a personal project on their own, the assessment of which is validated by the IB. This personal and creative work serves as a summative account of the student’s ability to carry out independent work.

At the same time, schools can register their students for optional external assessment (electronic assessment) for all other elements of the programme. EPBI enrolls all its students for this exam.

At EPBI, students will present the following subjects: English literature, French, Individuals and Societies, Science (Biology, Chemistry and Physics) and Mathematics.

This assessment allows students who meet the passing criteria to receive an official certificate recognized worldwide. It is also very good practice for the International Baccalaureate exam that students will take two years later.

ÉCOLE PRIVÉE BILINGUE INTERNATIONALE

Domaine de Massane. 34670. BAILLARGUES

Tél. : (33) 467 707 844 Fax: (33) 467 707 846 Mail: info@epbi.net Web: www.epbi.net

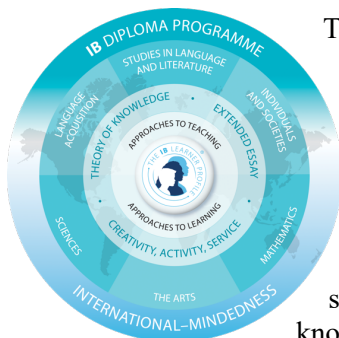
RC B389043423



IB DP Study Programme (IB)

1st Year DP (IB DP) (11th grade / year 12) and **2nd Year DP** (12th grade / year 13)

The IB Programme aims to educate pupils who already have an excellent general knowledge and will address the intellectual, social, emotional and physical well-being of students and determination to succeed.



The language of instruction for the IB DP is **English**.

Bilingual students are able to follow a subject course in subject groups 3 or 4 in another language.

The study programme is made up of **6 subject groups and the common core**.

The common core, which includes 3 elements, aims to broaden the students' learning experiences and encourage them to apply their knowledge and skills.

- Theory of Knowledge (TOK)
- The Extended Essay
- CAS (Creativity, Action, service)

The 6 subject groups are:

- Group 1: Language and Literature
- Group 2: Language Acquisition
- Group 3: Individuals et Societies
- Group 4: Sciences
- Group 5: Maths
- Group 6: Arts

Different subjects are offered within each group.



Subject choice in the IB DP

Learners on the Diploma Programme choose one subject in each of the first five subject groups and **an extra subject** which can either be Arts from group 6 or another subject from groups 1 to 5. Certain subjects will be studied at **Higher level (HL)**, whereas others will be at **Standard Level (SL)**.

HL and SL courses differ in scope but are measured according to the same grade descriptors. However, students at HL are expected to demonstrate a greater body of knowledge, understanding and skills at this higher level.

Each student must take at least three (but no more than four) subjects at higher level, and the remaining at standard level. **Standard level** subjects require **150 teaching hours** whereas the **higher level** are comprised of **240 hours**.

ÉCOLE PRIVÉE BILINGUE INTERNATIONALE

Domaine de Massane. 34670. BAILLARGUES

Tél. : (33) 467 707 844 Fax: (33) 467 707 846 Mail: info@epbi.net Web: www.epbi.net

RC B389043423

2/ National Curriculum

From Kindergarten to the French Bacculaureate



Kindergarten

TPS (Très Petite Section) / PS (Petite Section) –MS (Moyenne Section)–GS (Grande Section)

Educational Organisation



There are four year groups in kindergarten: TPS for the 2 year olds, PS for the 3 year olds, MS for 4 year olds, GS for 5 year olds. Generally speaking, kindergarten children integrate the class which is most appropriate to the child's stage of development. There may also be mixed year group classes for educational purposes or due to pupil numbers. In kindergarten, French and English languages are taught very early on offering optimal learning conditions of immersed language learning giving remarkable benefits both linguistically and cognitively.

Early language learning develops both listening and speaking skill sets.

Pupils develop in a stimulating environment through interactions with other children and through play. They develop their autonomy, self-confidence and respect for themselves and others. We encourage curiosity and initiative.

The teaching team is made up of native English and French speaking teachers. Each teacher is permanently assisted by a nursery assistant. During this period, which is favorable for verbal communication, Kindergarten classes apply the simplest but most effective teaching methods.

Toute Petite Section and Petite Section

The children are in total immersion in English.

The native English-speaking teacher helps them with learning and creative skills.

In the classroom, in the playground and in the canteen, they speak, listen to and sing in English.

Moyenne Section and Grande Section

Children are immersed in a different language every other day:

- in English for discovery Topics and English language learning with their native English-speaking teacher
- in French for the discovery of French and Maths with their French-speaking teacher.



The first notions of EMC (Moral and Civic Education) and EVAR (Life Skills and Relationship Education) are taught both in English and in French.

Activities such as psychomotricity and artistic and sense perception sessions are organized every week.

ECOLE PRIVEE BILINGUE INTERNATIONALE

Domaine de Massane. 34670. BAILLARGUES

Tél. : (33) 467 707 844 Fax: (33) 467 707 846 Mail: info@epbi.net Web: www.epbi.net

RC B389043423

Primary School



CP (Cours Préparatoire)
CE1 (Cours Elémentaire Year 1) CE2 (Cours Elémentaire Year 2)
CM1 (Cours Moyen Year 1) – CM2 (Cours Moyen Year 2)

Educational organisation

Pupils benefit from a completely bilingual (French-English) education, 2 days/week in French and 2 days/week in English

- **French and Maths** are taught in French.
- **English and Topics (History, Geography and Science)** are taught in English.
- **EMC** (Moral and Civic Education) is taught both in English and in French.
- **EVAR** (Life Skills and Relationship Education) is taught in English and in French.



There may also be mixed year group classes for educational purposes or due to pupil numbers.

The teaching team is made up of native English-speaking and native French-speaking teachers.

→From CP onwards, children learn beginners' Spanish.

According to the different classes and age groups, other activities such as Art, P.E., Self-expression and Golf are set up during the whole school year.



From **CE1 to CM2**, children who have no or very little English will benefit from compulsory booster English classes.

From **CE1 to CM2**, children who have no or very little French will benefit from compulsory booster French classes.

Each pupil benefits from an individualised accompaniment during all their schooling at EPBI.

ECOLE PRIVEE BILINGUE INTERNATIONALE

Domaine de Massane. 34670. BAILLARGUES

Tél. : (33) 467 707 844 Fax: (33) 467 707 846 Mail: info@epbi.net Web: www.epbi.net

RC B389043423

Secondary School

6^{ème} - 5^{ème} - 4^{ème} - 3^{ème}

The secondary school prepares for the Brevet exam at the end of the 4th year (3^{ème}) which leads on to the French sixth form or lycée (Seconde, Première and Terminale).

Educational organisation

- limited number of pupils in class.
- directed study time after school.
- intensive communication with the family-pupil-teaching team.



Weekly continuous assessment in all subjects:

- 2 x 1 hour supervised assessment tests or DS (Devoirs surveillés) for 6^{ème} and 5^{ème}.
- 1 x 2 hour DS for 4^{ème} and 3^{ème}.

1 mock exam for the DNB (National Brevet) per term (3^{ème})

2 different sections available:



The bilingual section for students who speak perfect English. Maths, French, Physics-Chemistry, P.E., Technology, are taught in **French**. Biology and the Earth Sciences, History, Geography, Civil Education, are taught **English**.

Languages

- Advanced English
- 2nd foreign language (LV2) from 6^{ème} onwards: Spanish
- FLE (*French as a Foreign Language*): Booster French classes are compulsory for all non-French speaking pupils.



The European section for pupils who are not fluent in English
All subjects are taught in **French**.
English is taught to reinforce notions and level.

Languages

- 2nd foreign language (LV2) from 6^{ème} onwards: Spanish
- FLE (*French as a Foreign Language*): Booster French classes are compulsory for all non-French speaking pupils.
- Booster English classes (in small groups)

ECOLE PRIVEE BILINGUE INTERNATIONALE
Domaine de Massane. 34670. BAILLARGUES
Tél. : (33) 467 707 844 Fax: (33) 467 707 846 Mail: info@epbi.net Web: www.epbi.net
RC B389043423



Sixth Form or High School

2nde générale, 1^{ère} générale, Terminale générale

Educational organisation

- limited number of pupils in class.
- intensive communication with the family-pupil-teaching team.
- Management of post-baccalaureate applications and international university applications.



All sixth form students benefit from regular and progressive exam practice:

- 3 official baccalaureate mock exams (*written and oral*) every school year.
Regular assessments or DS (*devoirs surveillés*): 1 x 3 hour test / week in 2nde, 1 x 4 hour test / week in 1^{ère} and Terminale

The official programme

2nde Générale

French, History- Geography, Civic and Moral Education (EMC), Foreign Languages A and B, Maths, Physics-Chemistry, Biology and Earth Sciences, Sport, Social and Economic Sciences, Personalised Accompaniment.

1^{ère} Générale

Common core: Scientific Education, French, History- Geography, Foreign Languages A and B, Sport, EMC.

Speciality options (3 compulsory subjects): Maths, Physics-Chemistry, Biology and Earth Sciences, Social and Economic Sciences (SES), History-Geography/Geopolitics/Political science (HGGSP).

Orientation: Help, guidance and management of post-baccalaureate study choices and Parcoursup or other online international university entry platforms (COMMON & UCAS).

Terminale Générale

Common core: Scientific Education, French, History- Geography, Foreign Languages A and B, Sport, EMC.

Speciality options (2 compulsory subjects): Maths, Physics-Chemistry, Biology and Earth Sciences, Social and Economic Sciences (SES), History-Geography/Geopolitics/Political science (HGGSP).

Post-Bac orientation, counselling and management of university applications.

Options: Complementary Maths
Expert Maths

ECOLE PRIVEE BILINGUE INTERNATIONALE

Domaine de Massane. 34670. BAILLARGUES

Tél. : (33) 467 707 844 Fax: (33) 467 707 846 Mail: info@epbi.net Web: www.epbi.net

RC B389043423







The Dual Diploma

From 3^{ème} to Terminale and from MYP4 to DP2

ACADEMICA
INTERNATIONAL
STUDIES

EPBI continues its perspective of development and training by offering, in partnership with Academica Dual Diploma™, the double diploma:

- French Baccalaureate & High School Diploma (American Baccalaureate).  
- IB International Baccalaureate & High School Diploma (American Baccalaureate).  
The partnership between the International Baccalaureate at EPBI and the High School Diploma, Academica Dual Diploma™, is a first worldwide.

How to obtain the High School Diploma?

To validate a High School Diploma students must obtain 24 credits:

Subject	24 credits required for this course
Literature	4 credits (writing a dissertation and reading)
English	4 credits
Mathematics	4 credits (Algebre and Geometry)
Sciences	3 credits, 2 for practicals in the science lab and 1 in Earth Sciences
Social Sciences	1 credit in World History, 1 credit History of the USA ½ credit in USA Government + ½ credit Economics
Art	1 credit Applied Arts or History of Art or Debating and Eloquence
Physical and Health Education	1 credit Physical and Health Education
Electives	4 credits from a range of other subjects* to choose from

18 credits are obtained from the French or IB curriculum reports.

6 credits are obtained from the American Studies course:

- 2 credits in English
- 1 credit in History of the USA
- ½ credit in USA Government + ½ credit in Economy
- 2 credits in Electives

The Electives* on offer are: Criminology, Digital Photography, Engineering and Technology, Management Skills, Psychology, Public Speaking and Journalism and finally College Preparation (SAT).

How do our students work?

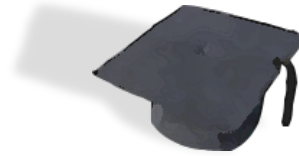
- Students study their chosen subjects independently and at their own pace, on their own computer during specified times on their school timetable and at home (like an extra-curricular activity).
- Students may consult all documents via the Academica educational platform in order to study and do their homework.
- Videoconferences with their American teachers.

ECOLE PRIVEE BILINGUE INTERNATIONALE
Domaine de Massane. 34670. BAILLARGUES
Tél. : (33) 467 707 844 Fax: (33) 467 707 846 Mail: info@epbi.net Web: www.epbi.net
RC B389043423



Exams

- DNB (National Brevet Diploma)
- IB MYP CERTIFICATE (MYP5)
- FRENCH BACCALAUREATE
- INTERNATIONAL BACCALAUREATE (IB)
- ACADEMICA DUAL DIPLOMA
- SAT (Scholastic Assessment test)
- CAMBRIDGE UNIVERSITY ENGLISH ASSESSMENT EXAMS (YLE, KET, PET, FCE, CAE, CPE)



Diplôme National du Brevet (DNB)

The DNB assesses the knowledge and skills acquired in secondary school. The exams cover French, Mathematics, History-Geography and EMC, Science and English.

This exam is excellent preparation for the Baccalaureate.

The DNB is open to all 3ème (Year 10 / 9th Grade) students and MYP4 (IB) pupils who wish to take it.

Official Assessment in MYP

In MYP5, the final year of MYP, students must carry out a personal project on their own, the assessment of which is validated by the IB. This personal and creative work serves as a summative account of the student's ability to carry out independent work. At the same time, schools can register their students for optional external assessment (electronic assessment) for all other elements of the programme.

At EPBI, students will present the following subjects: English literature, French, individuals and societies, biology, chemistry, physics and mathematics.

This assessment allows students who meet the passing criteria to receive an official certificate recognized worldwide. It is also very good practice for the International Baccalaureate exam that students will take two years later.

The French National BACCALAUREATE



The French Baccalaureate allows access mainly to higher education at universities in France, but also to universities abroad (under certain conditions). During their baccalaureate preparation, pupils benefit from personalised accompaniment. The number of students per class is reduced allowing more individualised time with the teachers.

Every year, many of our students obtain merit or distinction allowing them to access the prestigious "preparation courses" for the French grandes écoles (**Please see the EPBI School Profile**).

The International BACCALAUREATE



The International Baccalaureate allows access to universities around the world. Higher education universities find many advantages in admitting students who have completed IB programmes. Indeed, the education that the organisation provides to these students allows them to develop the knowledge, skills and abilities they need to succeed throughout their university studies.

Through their IB journey, students develop:

- time management skills as well as a real sense of personal motivation;
- a deep interest in civic commitment;
- remarkable academic skills;
- strong research and written communication skills;
- critical thinking skills;
- an international perspective.

Each year, the **School Profile** is published in order to have a detailed view of our results and admissions to different universities around the world.

ECOLE PRIVEE BILINGUE INTERNATIONALE

Domaine de Massane. 34670. BAILLARGUES

Tél. : (33) 467 707 844 Fax: (33) 467 707 846 Mail: info@epbi.net Web: www.epbi.net

RC B389043423

ACADEMICA DUAL DIPLOMA



ACADEMICA
INTERNATIONAL
STUDIES

EPBI continues its evolution and training perspective by offering, in partnership with Academica Dual Diploma TM, a double diploma:

- French Baccalaureate & High School Diploma
- IB International Baccalaureate & High School Diploma.

This collaboration between the EPBI International Baccalaureate Diploma and the Academica Dual Diploma TM High school diploma is a first worldwide.

SAT

American University Admission Examination (Scholastic Aptitude Test)



The SAT (or Scholastic Aptitude Test) is a college entrance exam required for most applications to American universities. For several years now, major European Business Schools such as Luigi Bocconi University in Milan, ESCADE in Barcelona and IE Madrid have also required an SAT score. The SAT is a test that measures general English verbal and mathematical reasoning skills.

EPBI is accredited as an examination centre and preparation centre.

As such, courses are organised during school holidays (*October–February–Easter–Mid August*).

These 25-hour courses over a week provide intensive training in reasoning and multiple choice questions for the SAT.

This is an opportunity to learn the right strategies to increase your final score.



Exam dates

March – June – August – September – October – November - December

ECOLE PRIVEE BILINGUE INTERNATIONALE
Domaine de Massane. 34670. BAILLARGUES
Tél. : (33) 467 707 844 Fax: (33) 467 707 846 Mail: info@epbi.net Web: www.epbi.net
RC B389043423



Cambridge university exams are well-known in France throughout the academic and professional world. They represent reliable internationally recognised levels of English proficiency. In France, exam centres are managed by the Cambridge Examinations Officer.

Exam preparation: specific preparation is given according to the level and age of the pupils.

YLE (Young Learners English test/Starters-Movers-Flyers) for primary school children

There are 3 levels: Starters, Movers (A1*), Flyers (A2*)

Objectives are to:

- test the use of English fairly at a primary level
- give children access to their first ever international examination
- promote knowledge and efficient teaching
- encourage future language learning.

KET (Key English Test) (A2*)

This is an elementary level exam, the first level (A2) offered by Cambridge for pupils from 11 years. Exam preparation is challenging for certain students but the satisfaction of passing the exam will motivate them to continue to the next level by studying for the PET the following year.

PET (Preliminary English Test) (B1*)

This is an intermediate level exam, the second level (B1) offered by Cambridge for pupils from 11 years. This exam tests and validates the candidate's ability to communicate both in written and spoken English in everyday situations.

FCE (First Certificate in English) (B2*)

This is the third level (B2) offered by Cambridge for pupils aged 12/13 years onwards. It offers a high level linguistic qualification necessary in order to access Higher Education abroad or to work in an English-speaking country or simply to be able to communicate easily in any situation.

This level can lead on to studies or work in PR, bilingual or trilingual secretarial work, personal assistant, trade and banking, hotel and tourism, transport, travel agencies, international airlines, international correspondence, diplomatic work, interpreting and translation, IT, positions at the EU, etc. ...

CAE (Certificate in Advanced English) (C1*)

This is the fourth level (C1) offered by Cambridge for pupils aged 14/15 years onwards. It's the most well-known Cambridge exam worldwide. It's the qualification "par excellence" for anyone seeking a choice of studies or work abroad. As many of our students would like to use their in English in their future career, we strongly recommend them to reach this high advanced level before the end of their school education.

This level can lead on to studies or work in PR, bilingual or trilingual secretarial work, personal assistant, trade and banking, hotel and tourism, transport, travel agencies, international airlines, international correspondence, diplomatic work, interpreting and translation, IT, positions at the EU...

CPE (Certificate of Proficiency in English) (C2*)

This is the fifth and highest level (C2) in the series of exams offered by Cambridge for practically native English speaking students of English from the age of 16 years onwards.

This high level exam will help our students to study in the most prestigious overseas universities (Oxford, Cambridge, Harvard, Stanford ...) or work in any field or discipline such as banking and finance, IT, hotel and tourism, diplomatic work, marketing, business management, medicine and pharmaceuticals.

(* Common European Framework for Languages (CEF))

ECOLE PRIVEE BILINGUE INTERNATIONALE

Domaine de Massane. 34670. BAILLARGUES

Tél. : (33) 467 707 844 Fax: (33) 467 707 846 Mail: info@epbi.net Web: www.epbi.net

RC B389043423

Activities

Within the education framework of the school, EPBI offers many different scholastic activities on top of regular classroom lessons such as Golf, Sport and Physical Education, Artistic Expression and Art.

Sport and Physical Education in Kindergarten and Primary

Cycle 1

Psychomotricity in cycle 1 has 4 essential objectives for a child:

- Moving in space and on objects
- Adapting movement to various situations
- Communicating with others through activities and artistic expression
- Working together, cooperating, and defending in order to set up real strategies.



These specific physical activities suitable for 2-5 year olds contribute to the motor, sensory, emotional and intellectual development of the child. It is an opportunity to explore, to express oneself, to act in a familiar environment, then gradually do the same in a less familiar environment. Psychomotricity allows you to locate yourself in space.

This activity is taught by a qualified Sports and Health Education teacher.

Cycle 2 / Cycle 3 / Cycle 4

This programme is part of the common foundation of knowledge, skills and culture. Sport and PE programmes aim to acquire five main skills:

- develop motor skills and learn to express yourself using your body
- appropriate methods and tools, through physical and sports practice
- share rules, take on roles and responsibilities,
- learn to maintain your health through regular physical activity
- acquire physical, sporting and artistic knowledge.

Golf for CM1/CM2 - 6^{ème} - 5^{ème}



The aim of the introductory golf sessions is to make students independent on a golf course and a driving range.

We also aim to teach the rules and regulations as well as the specific vocabulary of the game so each stage of the game of golf can be differentiated.

Rules must be respected in order to learn safely and in harmony with the other learners and their environment.

This activity tries to combine rules of the game and performance:

- to develop autonomy and enjoyment for golf
- to grow technically, physically, mentally and strategically
- to be able to observe and analyse different situations in the game
- to learn to concentrate, stay attentive and manage one's emotions
- to acquire basic techniques for the routine of the game (assessing information, making a decision, practising a swing, aiming with the final shot for the hole).

There is a test at the end of each term which allows the golf instructors to assess their pupils' practical and listening skills, progress and technical skills.

ECOLE PRIVEE BILINGUE INTERNATIONALE
Domaine de Massane. 34670. BAILLARGUES
Tél. : (33) 467 707 844 Fax: (33) 467 707 846 Mail: info@epbi.net Web: www.epbi.net
RC B389043423

Sensory Perception and Artistic Expression in Kindergarten



Children in TPS, PS, MS, GS classes of Kindergarten have body language expression classes once a week. During the school year, they discover a different theme every term to exploit and develop their sensory and artistic perception through dance, music, theatre, relaxation, circus activities and team games. The workshops also allow the children to discover the world outside their classroom –sports field, park, art classroom.

Children learn self-expression skills and develop their creativity around particular themes such as colours, emotions, animals, seasons, the 5 senses, all through fun and creative learning.

Art from CP to CM2

All primary school children have one art class a week on a chosen theme. Our pupils discover different artists by observing their artwork and then trying to recreate these various artworks (paintings, sculptures, assemblages ...). Individually or in groups, pupils reproduce the artwork through copying the famous artist using various materials such as paper, plastic, wood, metal or textiles.

Art classes give the opportunity to each child to express their artistic nature and creative skills, to build their confidence and to flourish by finishing a piece of artwork.



Spanish from CP to CM2



Spanish for beginners is offered once a week to all primary school children.

Lessons are age-appropriate and concentrate on vocabulary, pronunciation and listening.

Different themes are covered such as school, days of the week and months of the year, numbers, colours, animals, family, food, clothes...

From the age of 9 years, children will learn a little grammar and learn how to conjugate certain verbs, learn about Spanish civilization and culture.

Artistic and fun activities are incorporated into the discovery of the Spanish language.

Educational Fieldtrips or Visits



In connection with the themes studied during the year (annual theme in Kindergarten, History, Geography, Science, PE, etc. in Elementary), we organise various educational activities.

Within EPBI, depending on the educational project, we invite professionals to our classrooms to give presentations, and to lead discovery and

experimentation workshops (storytelling, circus acts, food-tasting, festivals or shows, eco-citizenship course, etc.). Outdoor fieldtrips bring learning to life, as they give our pupils the opportunity to experience many discoveries and experiences on topics previously worked on during the year in the classroom.

These one-off events give meaning to learning, enrich our students' general knowledge and create deeper pupil-teacher connections.

ECOLE PRIVEE BILINGUE INTERNATIONALE

Domaine de Massane. 34670. BAILLARGUES

Tél. : (33) 467 707 844 Fax: (33) 467 707 846 Mail: info@epbi.net Web: www.epbi.net

RC B389043423



CLUBS

From 6^{ème}/MYP1 to 3^{ème}/MYP5

Chess Club



The club offers middle and high school students a stimulating environment to develop concentration, strategic thinking, and self-confidence, while enjoying the game of chess. Each week, students participate in a course that combines theory, instruction, and practice, allowing them to progress at their own pace.

They learn the fundamentals of the game (openings, middlegame, endgames), essential tactics, and strategies, and immediately put these concepts into practice through games, challenges, exercises, and mini-tournaments.

The club helps improve concentration, memory, decision-making, and stress management in a supportive and motivating environment. Whether beginners or experienced players, all students share their passion, progress together, and most importantly, enjoy playing.

Golf Club

Playing golf helps teenagers develop concentration and sustained attention.

It encourages self-discipline, autonomy, and respect for rules.

Golf improves coordination, balance, and fine motor skills.

It teaches stress management and emotional control in challenging situations.

Practiced outdoors, it supports both physical and mental well-being.

Golf promotes strong values such as honesty, fair play, and respect for others.

It is accessible to a wide range of profiles and carries a low risk of injury.

Finally, it enhances social interaction, including intergenerational exchanges, and self-confidence.



Musical Theatre Club



The Musical Theatre Club offers students a complete and stimulating artistic experience, combining singing, dancing, and acting. It allows young people to develop their creativity, confidence, and teamwork skills while discovering the exciting world of the stage.

Weekly sessions include a variety of activities: vocal warm-ups, staging workshops, improvisation games, choreography rehearsals, and work on selected scenes. At the end of the year, students present a final performance for families, celebrating their work and dedication.

Tennis/Padel Club

Playing tennis and padel helps adolescents develop **overall physical fitness** (endurance, coordination, reflexes). It promotes **concentration, quick decision-making, and stress management** during matches.

These sports strengthen **self-confidence** through individual progress and achieved goals.

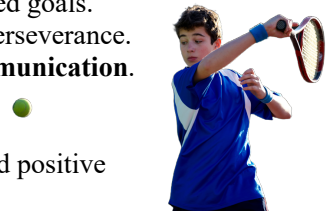
They instill strong **educational values** such as respect for rules, fair play, and perseverance.

Padel, being highly collaborative, particularly encourages **team spirit and communication**.

Tennis promotes **autonomy and personal responsibility** on the court.

Both sports contribute to **emotional balance** and better emotion management.

Finally, they provide a **structured social environment**, fostering integration and positive relationships.



ECOLE PRIVEE BILINGUE INTERNATIONALE

Domaine de Massane. 34670. BAILLARGUES

Tél. : (33) 467 707 844 Fax: (33) 467 707 846 Mail: info@epbi.net Web: www.epbi.net

RC B389043423

School trips and trips abroad

School trips and trips abroad are an important part of the school's philosophy.

Discovery trip

Every year children from Moyenne Section, Grande Section in Kindergarten and CP take a trip with their teachers.

This discovery trip is a privileged moment for pupils and teachers who create a very special set of memories together. Relationships change as the children see their friends and teachers outside the classroom.



This trip helps to discover the unknown and to do different activities such as visiting a farm, gardening, astronomy pony-riding, making bread or jam, discovering flowers and nature in the region and growing a herb garden...

This short trip gives hands-on experience and is a springboard for learning acquisition.

This trip can also be the conclusion to different projects during the school year.

New projects begin after the short discovery trip.

Study trips abroad

Since the creation of EPBI, the school has always organised international school trips.

Language trips open to pupils from CE1 to CM 2 and IPP



This week-long school trip takes place in Europe (England, Malta, Ireland, and Scotland).

It is organised for a week around the Easter holidays. .

For our 7 to 10 year old pupils here at the international bilingual school, a school trip to England, Malta, Ireland or Scotland offers many important benefits:

- An authentic linguistic immersion

A school trip in one of these countries offers complete immersion in an authentic English-speaking environment. The children are exposed to real-life native English which allows them to:

- ✚ Improve their oral comprehension and their pronunciation
- ✚ Learn more vocabulary naturally
- ✚ Develop their speaking skills in everyday situations
- ✚ Practise English in a fun and interactive way

ECOLE PRIVEE BILINGUE INTERNATIONALE
Domaine de Massane. 34670. BAILLARGUES
Tél. : (33) 467 707 844 Fax: (33) 467 707 846 Mail: info@epbi.net Web: www.epbi.net
RC B389043423

- A cultural discovery

These school trips give pupils the unique opportunity to discover British, Irish or Maltese culture. Our pupils can:

- ✚ Visit famous places
- ✚ Participate in local culture and traditions
- ✚ Taste local cooking

This cultural immersion completes their language learning and broadens their horizons.

If the school trip is also based on sport, it offers a variety of activities allowing our pupils to learn English while having fun.



Participating in these activities allows our pupils to:

- ✚ Improve their English: By interacting with their peers and English-speaking instructors, they practise their English in a dynamic context.
- ✚ Develop their social skills: team sports foster team spirit and friendship.
- ✚ Feel good both physically and mentally: Sports activities contribute towards physical health while building self-confidence.

School trips at this age also encourages:

- Independence and self-confidence
- Open-mindedness and tolerance
- Skills to adapt to a new environment

For children already attending EPBI, these school trips allow them to:

- Reinforce their linguistic skills through hands-on practice
- Put their knowledge learnt in class into practice
- Gain confidence in a real English-speaking context

Countries like England, Ireland and Scotland are not so far away and are easily accessible from France. This means:



- Short travelling time, suitable for young children.
- The possibility to organise short trips that are ideal for first-time school trip experiences.
- Reduced transport costs compared to destinations that are further away.

ECOLE PRIVEE BILINGUE INTERNATIONALE
 Domaine de Massane. 34670. BAILLARGUES
 Tél. : (33) 467 707 844 Fax: (33) 467 707 846 Mail: info@epbi.net Web: www.epbi.net
 RC B389043423

These countries offer professional organisations for young children that offer experienced, suitable educational centres with qualified and caring staff that have been designed specifically to welcome this age group.

In conclusion, a school trip to England, Ireland or Scotland can considerably enhance the educational experience of 7 to 10 year olds who attend the international bilingual school. These trips help to consolidate language skills, be immersed in an English-speaking culture, and develop precious personal skills, all in a close and safe environment.



A linguistic, cultural and immersive trip to an American or Canadian school depending on the destination and open to all National and International Secondary and Sixth Form School students.

This 10-day trip takes place in the USA or Canada. It is organised every school year during the October school holidays.

A linguistic and cultural stay in the United States or Canada offers many advantages for secondary and sixth form school students (National and International Curriculum), particularly in terms of language learning, cultural discovery and personal development.



Total immersion in an English-speaking environment allows students to progress quickly and efficiently in English.

Students can:

- ✚ Improve their oral and written skills
- ✚ Learn new vocabulary and perfect their pronunciation
- ✚ Gain self-confidence and oral fluency

Constant exposure to the language in real-life situations helps to accelerate learning and reinforces the practice of English on a daily basis.

A school trip to the USA or to Canada offers students a unique opportunity and total immersion in the North American culture.

Students can:

- ✚ Explore different customs, traditions and local ways of life
- ✚ Discover North American food, music, cinema and art
- ✚ Visit famous sites and wonders of nature

This cultural immersion allow students to develop a deeper understanding of North American society and to broaden their horizons.

A language school trip experience fosters students' personal development. They can:

- ✚ Gain independence and confidence
- ✚ Develop their adaptability to new environments
- ✚ Meet people from different backgrounds and make new friends

ECOLE PRIVEE BILINGUE INTERNATIONALE
Domaine de Massane. 34670. BAILLARGUES
Tél. : (33) 467 707 844 Fax: (33) 467 707 846 Mail: info@epbi.net Web: www.epbi.net
RC B389043423

These skills are precious for their future academic and professional life.

The possibility of a High School immersion offers several advantages such as:

- ❖ Interaction with local and international students
- ❖ An authentic experience of the North American education system
- ❖ Participation in typical extra-curricular activities

This immersion allows students to experience the daily life of North American High School students and to integrate the local community.

University campus visits are a major asset for our national and international Sixth Form School students.

- ✚ Discover a university campus and infrastructures
- ✚ Understand the North American higher education system
- ✚ Get inspiration for future studies or professions

These visits often motivate students in their choice of studies and helps them to imagine their academic future.



In conclusion, a cultural and linguistic school trip to the USA or Canada, combining High School immersion and university visits, offers a complete and rewarding experience.

Not only does it allow students to improve their English, but also to open up to a new culture, to develop essential personal skills and to prepare for their academic and professional future.



ECOLE PRIVEE BILINGUE INTERNATIONALE
Domaine de Massane. 34670. BAILLARGUES
Tél. : (33) 467 707 844 Fax: (33) 467 707 846 Mail: info@epbi.net Web: www.epbi.net
RC B389043423



Fees 2026 - 2027

SCHOOL FEES

KINDERGARTEN and PRIMARY

Net prices (€) per school contract and per school year 2026 - 2027

Entry fee *: **2100,00 €**

Admin fee * : **650,00 €**

KINDERGARTEN		
Classes	Regime	Tariff
TPS	External	7980
PS	½ board school meal	9300
MS		
GS	½ board packed lunch	8650
NATIONAL PRIMARY		
Classes	Regime	Tariff
CP	External	7980
CE 1 – CE 2	½ board school meal	9680
CM 1 – CM 2		
	½ board packed lunch	8650
INTERNATIONAL PRIMARY		
IPP	Regime	Tariff
IPP4 – IPP5	External	10290
	½ board school meal	11990
	½ board packed lunch	10960

(*) *New enrolment (1st year only)*

ECOLE PRIVEE BILINGUE INTERNATIONALE

Domaine de Massane. 34670. BAILLARGUES

Tél. : (33) 467 707 844 Fax: (33) 467 707 846 Mail: info@epbi.net Web: www.epbi.net

RC B389043423


SECONDARY

Net prices (€) per school contract and per school year 2026 - 2027

Entry fee * : **2100,00 €**

Admin fee * : **650,00 €**

NATIONAL SECONDARY		
Classes	Regime	Tariff
6 ^{ème} to Terminale	External	8600
	½ board school meal	10290
	½ board packed lunch	9260

	INTERNATIONAL SECONDARY IB PROGRAMME	
MYP		
Classes	Regime	Tariff
MYP 1 and MYP 2	External	12330
	½ board school meal	14080
	½ board packed lunch	13000
MYP 3	External	14980
	½ board school meal	16720
	½ board packed lunch	15640
MYP 4 and MYP 5	External	17800
	½ board school meal	19550
	½ board packed lunch	18470
DP IB		
Classes	Regime	Tariffs
IB DP 1 IB DP 2	External	17800
	½ board school meal	19550
	½ board packed lunch	18470
IB MYP 5 exam enrolment		800
IB DP exam enrolment **		

(*) *New enrolment (1st year only)*

(**) *2nd Year DP IB*

ECOLE PRIVEE BILINGUE INTERNATIONALE
 Domaine de Massane. 34670. BAILLARGUES
 Tél. : (33) 467 707 844 Fax: (33) 467 707 846 Mail: info@epbi.net Web: www.epbi.net
 RC B389043423



Options

Enrolment on various optional courses can be made between 11th May 2026 & 29th May 2026.

Options ¹	Classes	Times	Tariffs		
Sensory perception and art expression	PS-MS-GS	1h / week	450 €		
Fun Artistic Workshops	CP, CE1 and CE2 CM1-PPI4-CM2-PPI5	1h / week	450 €		
Directed Study Time Primary*	CP to CM2 IPP4 / IPP5	Mon-Tue-Thurs 4:45 – 5:30 pm	1 day/week*	300 €	
			2 days/week*	550 €	
			3 days/week*	730 €	
		Friday ** 4:45 – 6:00 pm	180 €		
Directed Study Time Secondary	6 ^e - 5 ^e - 4 ^e - 3 ^e MYP1/MYP2 MYP3/MYP4	Tuesday 4:45 – 5:30 pm or 4:45 – 6:00 pm	300 €		
Supervised Study Time Secondary		Monday – Thursday 4:45 – 5:30 pm or 4:45 – 6:00 pm	1 day/week*	250 €	
			2 days/week*	480 €	
		Friday ** 4:45 – 6:00 pm	180 €		
FLE French as a foreign language	CE1-CE2 CM1-CM2 PPI4-PPI5	2 h / week	760 €		
English as a foreign language	CE1-CE2-CM1-CM2				
Cambridge Exam Preparation	CE1 to CM2 Secondary – Sixth Form	1h / week	450 €		
FLE French as a foreign language	6 ^{ème} to 3 ^{ème} MYP1 to MYP5	1h30 / week	570 €		
Chess Club	6 ^e - 5 ^e - 4 ^e - 3 ^e MYP1/MYP2 MYP3/MYP4	Thursday	350 €		
Musical Theatre Club		Monday	650 €		
Golf Club ***		3:30 – 5:30 pm	1 day/week	750 €	
			2 days/week	1490 €	
Tennis Club ***		Monday and/or Thursday	1 day/week	400 € to 430 €	
	2 days/week		550 € to 590 €		

(*) Monday – Tuesday - Thursday

(**) Extracurricular time: Friday 4.45-6pm.

(***) Registrations & payments with the partner club.

(1): The range of options offered is subject to change.

Study time is reserved for those pupils who are enrolled for the whole school year.

However, if you cannot collect your child at 4.45 pm due to unforeseen circumstances, all pupils will go to study time and you will be invoiced 14 €/day (invoice at the end of the month).

ECOLE PRIVEE BILINGUE INTERNATIONALE

Domaine de Massane. 34670. BAILLARGUES

Tél. : (33) 467 707 844 Fax: (33) 467 707 846 Mail: info@epbi.net Web:www.epbi.net

RC B389043423



School Opening Times

The School	
Monday-Tuesday-Thursday-Friday	From 7.45am to 6pm
Wednesday	From 7.45am to 4.30pm
The Classes	
Kindergarten --> TPS-PS-MS-GS Monday-Tuesday-Thursday-Friday	From 8.45am to 11.30am From 12.45pm to 4.30pm
Primary Monday-Tuesday-Thursday-Friday	From 8.45am to 4.30pm with a 1 hour lunch break
Secondary Monday-Tuesday-Wednesday-Thursday-Friday	From 8am to 4.30pm/6pm with a 1 hour lunch break

It is strictly forbidden to access the school premises during the school day unless you have the authorisation to do so via the intercom at the school gate.

Before and after official school times, all pupils are under their parents' responsibility.



School calendar

Zone C - Académie de Montpellier

First day back at school Tuesday 1st September 2026	
October half term	16th October 2026 2nd November 2026
Christmas	18th December 2026 4th January 2027
February half term	5th February 2027 22nd February 2027
Easter	2nd April 2027 19th April 2027
Summer holidays	Tuesday 29th June 2027

ECOLE PRIVEE BILINGUE INTERNATIONALE

Domaine de Massane. 34670. BAILLARGUES

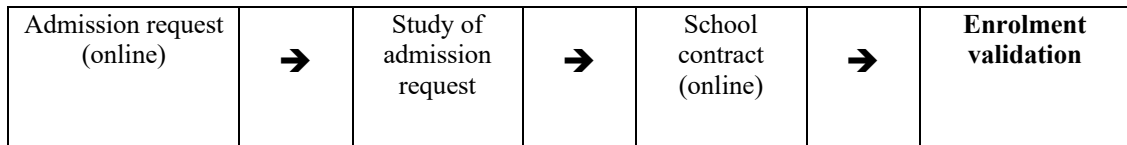
Tél. : (33) 467 707 844 Fax: (33) 467 707 846 Mail: info@epbi.net Web: www.epbi.net

RC B389043423



Terms of enrolment and payment

1 Admission procedure



The school contract refers to the whole school year 2026 - 2027. In the event of departure or arrival during the school year, enrolment will be subject to a partial school contract according to availability of places, including specific pricing terms.

Admission conditions

- Kindergarten: Each family will have an individual meeting. Children are welcome at the Kindergarten from the age of 2 years.
- National and International Schools: An individual meeting with the family is necessary prior to an admission request for the national and international school classes. Previous school reports are necessary from CE1 onwards.
- National and International Secondary School: All national secondary school classes are accessible to all students, bilingual or non-bilingual. The international secondary school MYP classes are open to all students with a good enough level in English. An individual meeting with the family is necessary prior to an admission request and all previous school reports are must be provided for study.
- National and International Sixth Form School: All national sixth form school classes are accessible to all students, bilingual or non-bilingual. The international sixth form school classes are open to all students with a good enough level in English. An individual meeting with the family is necessary prior to an admission request and all previous school reports are must be provided for study.

2 School fee payment

For new students

Study of educational file online: **150 €**

If the financial guarantor does not respond to this online request, the study fees will not be reimbursed.

Upon a favourable answer from the admissions committee

Upon signing the financial contract:

Admission fee: **650€**

Entry fee: **2100 €**

Deposit: **25 % of annual school fees.**

ECOLE PRIVEE BILINGUE INTERNATIONALE
Domaine de Massane. 34670. BAILLARGUES
Tél. : (33) 467 707 844 Fax: (33) 467 707 846 Mail: info@epbi.net Web: www.epbi.net
RC B389043423

For families already at the school

Deposit : **25 % of the total annual school fee** at the signing of the financial contract

The outstanding balance must be paid in accordance with the terms of enrolment.

In the event that school fees are paid by a third party (company, parent...), the financial guarantor must ensure that school fees are paid correctly.

The school cannot be held responsible for delayed or problem with payment.

Reductions

- A reduction in the annual school fee and entry fee is applied for families with more than one child (of the same parentage): the eldest sibling pays full rate, followed by -10% for the second child and then -20% etc..
- A 7% discount is applied to the balance of school fees in the event that total payment is made **before 01/08/2026**.

Payment

By cheque.

By bank transfer.

- include the reason of payment with the first name, last name and class of the child concerned
- ensure the correct payment is made on time.

Credit card

In cash (*Tax when resident in France: up to 1000€ / Tax when resident abroad: up to 15000 €*).

Payment via SEPA (*mandatory for payment through installments*).

→ The amount due is considered unpaid until actual receipt of funds in the school bank account.

Invoicing

The invoices are made in the name of the financial guarantor who signed the school contract (parents, legal guardian). In the event that the payer is a company, (the financial guarantor's employer), the invoice will be issued in the name of the company.

ECOLE PRIVEE BILINGUE INTERNATIONALE
Domaine de Massane. 34670. BAILLARGUES
Tél. : (33) 467 707 844 Fax: (33) 467 707 846 Mail: info@epbi.net Web: www.epbi.net
RC B389043423

How to pay

When enrolling, parents **from the countries within the SEPA** zone are able to pay, via SEPA bank transfer payments⁽³⁾, the outstanding balance of school fees, in two, three or eight installments⁽⁴⁾ according to the following conditions:

Balance payment	Admin fee	Deadlines (dd/mm/yyyy)
2 installments	35 € per installment	04/09/2026 – 05/02/2027
3 installments		04/09/2026 – 04/12/2026 05/03/2027
8 installments		04/09/2026 – 05/10/2026 05/11/2026 – 04/12/2026 05/01/2027 – 05/02/2027 05/03/2027 – 05/04/2027

Late enrolment

As the legal withdrawal period is 14 days, a pupil can integrate their class from the 15th day after the school contract signature (subject to validation by the Admissions Committee). However, this withdrawal period can be reduced upon written request by the financial guarantor.


3 Miscellaneous costs


Options (Study time, booster language classes, Cambridge exam preparation, Chinese classes), books and school supplies must be paid for in advance.

Personal expenses (medical costs, class photo, bank charges generated by foreign bank transfers and cheques etc.) must be paid upon receipt of invoice.

(3) Please see the list of SEPA countries on page 35

(4) Except partial school contracts


School year equivalence 2026 – 2027

Year of birth	Français	UK	Japan	India	USA	 IB
2024 2023	Très Petite Section (TPS) Petite Section (PS)	Nursery	K1	Nursery	Nursery	Nursery
2022	Moyenne Section (MS)	Reception	K2	Lower K	Pre-Kindergarten	
2021	Grande Section (GS)	Year 1	K3	Upper K	Kindergarten	
2020	Cours Préparatoire (CP)	Year 2	Grade 1	Std. 1	1st grade	PYP 1
2019	Cours Élémentaire 1ère année (CE 1)	Year 3	Grade 2	Std. 2	2nd grade	PYP 2
2018	Cours Élémentaire 2ème année (CE 2)	Year 4	Grade 3	Std. 3	3rd grade	PYP 3
2017	Cours Moyen 1ère année (CM 2)	Year 5	Grade 4	Std. 4	4th grade	PYP 4
	IPP 4 					
2016	Cours Moyen 2ème année (CM 2)	Year 6	Grade 5	Std. 5	5th grade	PYP 5
	IPP 5 					
2015	6ème	Year 7	Grade 6	Std. 6	6th grade	MYP 1
2014	5ème	Year 8	Grade 1	Std. 7	7th grade	MYP 2
2013	4ème	Year 9	Grade 2	Std. 8	8th grade	MYP 3
2012	3ème	Year 10	Grade 3	Std. 9	9th grade,	MYP 4
2011	Seconde	Year 11	Grade 1	Std. 10	10th grade	MYP 5
2010	Première	Year 12	Grade 2	Std. 11	11th grade	DP 1
2009	Terminale	Year 13	Grade 3	Std. 12	12th grade	DP 2

ECOLE PRIVEE BILINGUE INTERNATIONALE
 Domaine de Massane. 34670. BAILLARGUES
 Tél. : (33) 467 707 844 Fax: (33) 467 707 846 Mail: info@epbi.net Web: www.epbi.net
 RC B389043423



School Canteen Service



How it works

School canteen meals:

The school canteen meals are delivered by caterers every morning and reheated in the school canteen. Weekly menus are available a week in advance; they offer a variety of food types and follow seasonal produce.

Dietary needs and healthy food types are privileged.



ORGANIC FOOD: 2 completely organic meals every week (starter, main course, cheese, dessert).

Menus: Classic, Vegetarian or Pork-free

In case of allergies or specific eating habits, parents are advised to opt for the packed lunch from home option as individualised menus are not possible

Packed lunch from home:

Packed lunches (*Repas Maison*), are left in the morning in the designated lunch box lockers. Packed lunches are cold and are served at lunch time only.

Cost:

Annual fee

(Included in the school contract)

Half board fees for school canteen lunch and packed lunches from home are based on an annual fee within the school contract.

Reimbursements are not made should your child be absent.

Communication

CLEEBI

Cahier de Liaison Electronique de l'Ecole Bilingue Internationale.

With CLEEBI, each parent is informed instantly of what is happening at the school.

You will find:

- Various messages: date of a future outing or trip, new timetable for assessment tests, school canteen menu, etc. ... ,
- Important information about the school year: the teaching team, class organisation, book and supply lists, practical information, calendar of planned events...
- Online enrolment

CLEEBI lets the school inform you immediately of any new situation (weather warnings, health and safety protocols etc.), that could affect timetables at the school. New instructions are published here, allowing everyone to get organised according to the new procedure.

It is important to subscribe to www.cleebi.online as soon as you enroll.

In order to receive messages from CLEEBI, just go to www.cleebi.online and click on the subscribe tab: “**S’abonner à CLEEBI** » or



CLASSROOM



Each pupil, via their own email address@epbi.net, has access to “Classroom”, a virtual class with all lesson documents and resources and access to “Meet”, a videoconference link for every “Classroom”.

NOTEEBI Parents Space PRONOTE

NOTEEBI allows daily access to different information about your child’s schooling:

- ✓ the school year calendar (dates for class meetings and parent-teacher meetings)
- ✓ grades, all subjects, homework, average grade statistics...
- ✓ end of term reports (grades and teacher comments)
- ✓ online homework diary of work completed and work to do with deadlines
- ✓ absences, late arrivals, observations, punishments and sanctions.

To access these services, simply go to the parent space on Pronote (national education software) at the following address:www.noteebi.net, then use your parent **ID** and **password** sent to you by the school at the beginning of the school year.

ECOLE PRIVEE BILINGUE INTERNATIONALE

Domaine de Massane. 34670. BAILLARGUES

Tél. : (33) 467 707 844 Fax: (33) 467 707 846 Mail: info@epbi.net Web:www.epbi.net

RC B389043423



Appendix

List of SEPA Countries

1. Germany
2. Austria
3. Belgium
4. Bulgaria
5. Cyprus
6. Croatia
7. Denmark
8. Spain
9. Estonia
10. Finland
11. France
12. Greece
13. Hungary
14. Republic of Ireland
15. Iceland
16. Italy
17. Estonia
18. Lichtenstein
19. Lithuania
20. Luxembourg
21. Malta
22. Monaco
23. Norway
24. Netherlands
25. Poland
26. Portugal
27. Czech Republic
28. Romania
29. United Kingdom
30. San Marino
31. Slovenia
32. Slovakia
33. Sweden
34. Switzerland
35. Andorra
36. The Vatican



Resources:

<http://www.ibo.org/fr/>

ECOLE PRIVEE BILINGUE INTERNATIONALE
Domaine de Massane. 34670. BAILLARGUES
Tél. : (33) 467 707 844 Fax: (33) 467 707 846 Mail: info@epbi.net Web: www.epbi.net
RC B389043423